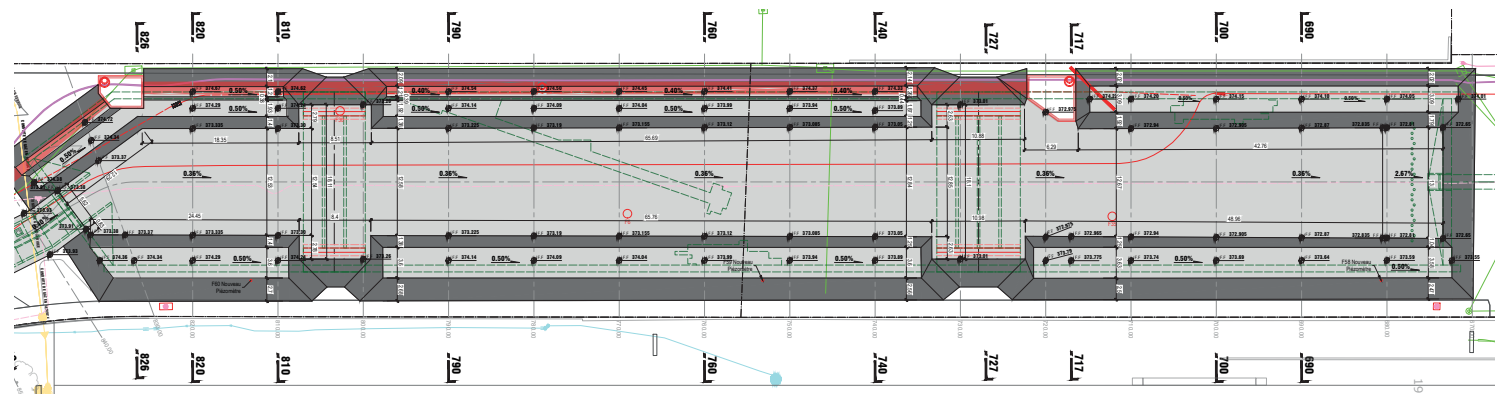
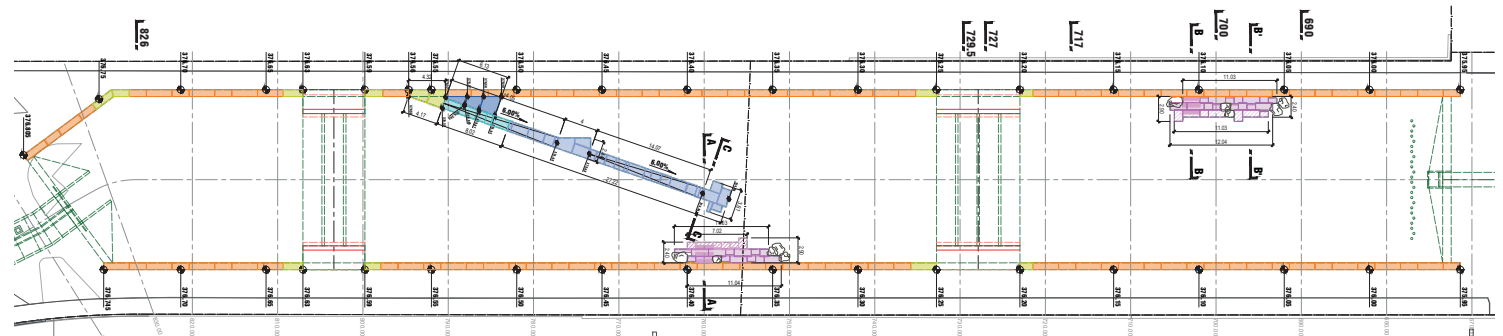


REMISE A CIEL OUVERT DE LA DRIZE

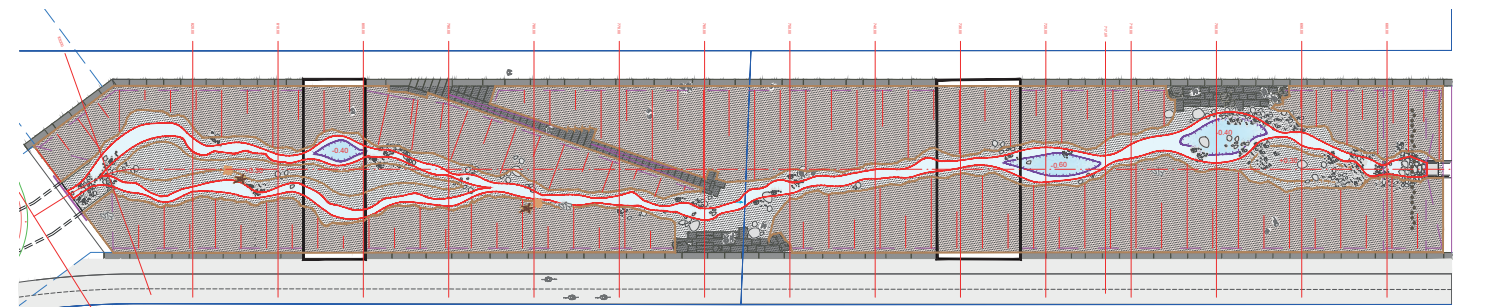
1^{ERE} ETAPE DE REALISATION 2025 - SECTEUR BOISSONNAS - PHASAGE DES TRAVAUX



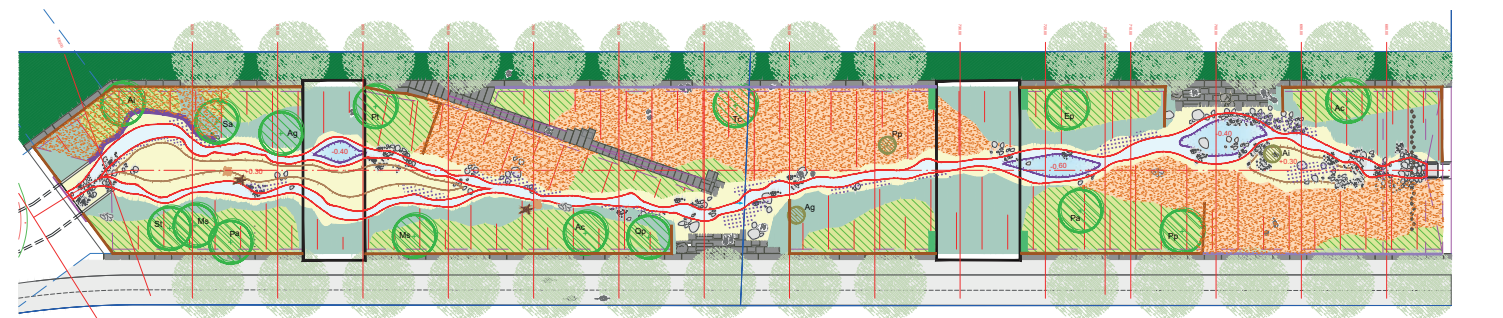
Génie civil et géotechnique



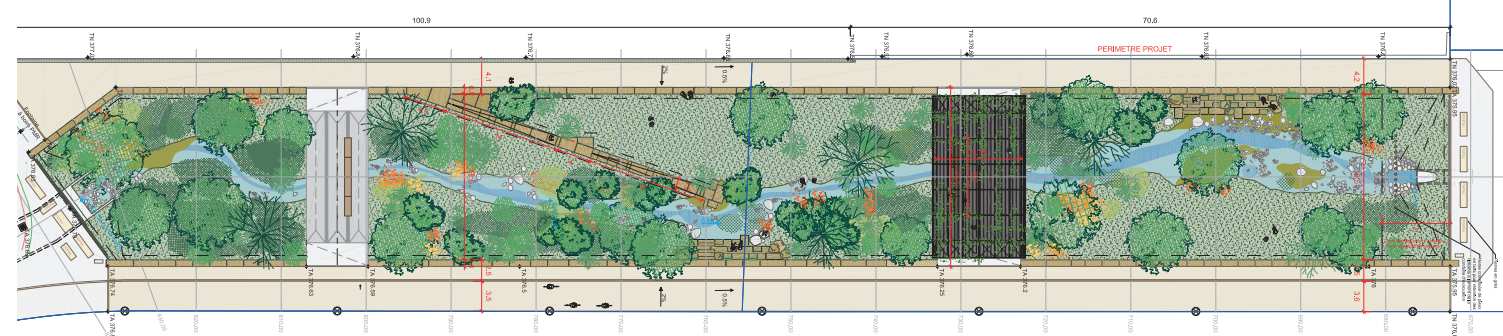
Génie civil et paysage



Biologiste et hydraulicien



Biologiste et paysage



Etat final